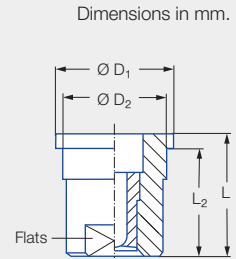
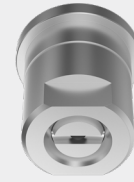
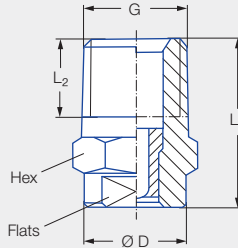
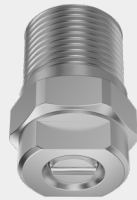


High- and medium-pressure cleaning nozzles

- Solid and flat spray nozzles for high- and medium-pressure cleaning

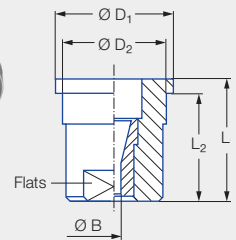
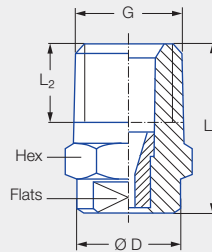
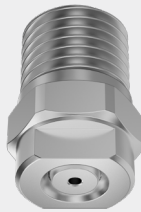
Advantages

- Maximum cleaning force for razor-sharp cleaning jets
- Wear-resistant special stainless steel for long service life
- Protection against mechanical damage through recessed outlet opening
- Maximum precision for uniform, concentrated jet force
- Connection possible via male thread and union nut



Dimensions in mm.

Flat fan nozzles



Solid stream nozzles

G	Dimensions [mm]								Weight [g]	p _{max} ¹ [bar]
	L ₁	L ₂	Ø D	Ø D ₁	Ø D ₂	Flats	Hex	Flats		
EN 10226 R 1/4	22.00	10.00	13.00	-	-	-	14	10	18.00	approx. 700
1/4 NPT	22.00	10.00	13.00	-	-	-	14	10	18.00	approx. 700
Assembly with union nut G 3/8 ISO 228	16.00	14.00	-	14.80	12.65	10	-	-	13.00	approx. 300

¹ Applies only to operation with constant pressure.

Technical data:



Nozzle sizes
04-06



Spray angles
0°-40°



Material
Hardened stainless steel (carbide insert on request)



Pressure ranges
5-40-200 bar



Width across flats
10 mm

Spray angle	Nozzle size	V̇ [l/min]			Order No.		
		[bar]			Male thread		Version for union nut
		5.0	60.0	100.0	1/8" NPT	1/4" NPT	G 3/8
0°	04	2.04	7.1	9.2	550.450	546.450	548.450
	05	2.55	8.9	11.5	550.480	546.480	548.480
	06	3.05	10.6	13.6	550.520	546.520	548.520
15°	04	2.04	7.1	9.2	608.451	602.451	652.451
	05	2.55	8.9	11.5	608.481	602.481	652.481
	06	3.05	10.6	13.6	608.521	602.521	652.521
25°	04	2.04	7.1	9.2	608.452	602.452	652.452
	05	2.55	8.9	11.5	608.482	602.482	652.482
	06	3.05	10.6	13.6	608.522	602.522	652.522
40°	04	2.04	7.1	9.2	608.453	602.453	652.453
	05	2.55	8.9	11.5	608.483	602.483	652.483
	06	3.05	10.6	13.6	608.523	602.523	652.523